

CONSTRUCTION IMPACTS TO TRAFFIC

Imperial Highway Street Resurfacing Phase 3

Eastbound Lane Closures from Vista del Mar to Sepulveda Boulevard

Saturday September 22 and Sunday, September 23; Daily from 5:30AM to 6PM



IMPACTS

EASTBOUND IMPERIAL HIGHWAY: SATURDAY, SEPTEMBER 22 - SUNDAY, SEPTEMBER 23

CLOSED

- **SATURDAY:** ALL EASTBOUND LANES from Pershing Drive to Sepulveda Boulevard (Rolling Closure)
- **SUNDAY:** ALL EASTBOUND LANES from Vista del Mar to Sepulveda Boulevard (Rolling Closure)

OPEN

- All westbound lanes of Imperial Highway, from Sepulveda Boulevard to Vista Del Mar, will be maintained at all times
- Local access to cargo, catering and other airport facilities along Imperial Highway will be maintained at all times

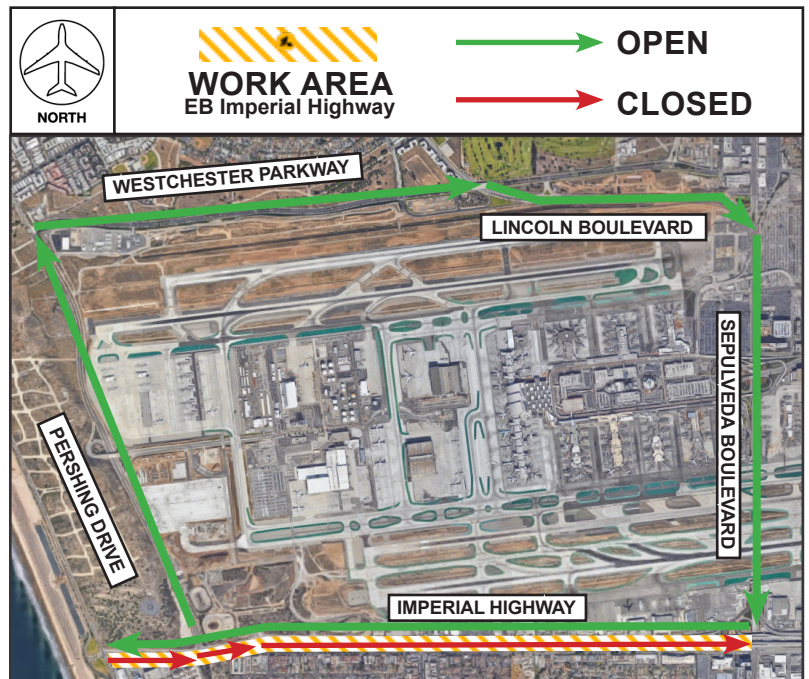


ACTIVITY & DETOURS

Los Angeles Bureau of Street Services will resurface eastbound Imperial Highway from Pershing Drive to Sepulveda Boulevard on Saturday, September 22, and from Vista del Mar to Sepulveda Boulevard on Sunday, September 23, from approximately 5:30AM to 6PM.

Local access to cargo, catering and other airport facilities along Imperial Highway will be maintained at all times during construction. Please plan for potential delays.

This is the last of a three-phase BSS project to resurface westbound and eastbound Imperial Highway between Sepulveda Boulevard and Vista del Mar. Phase 1 was completed September 9. Phase 2 was completed September 16.



📞 LAX Construction Hotline: 310-649-5292 | 🐦 @FlyLAXAirport | 📘 LAInternationalAirport
 📧 LAXConstructionHotline@LAWA.org